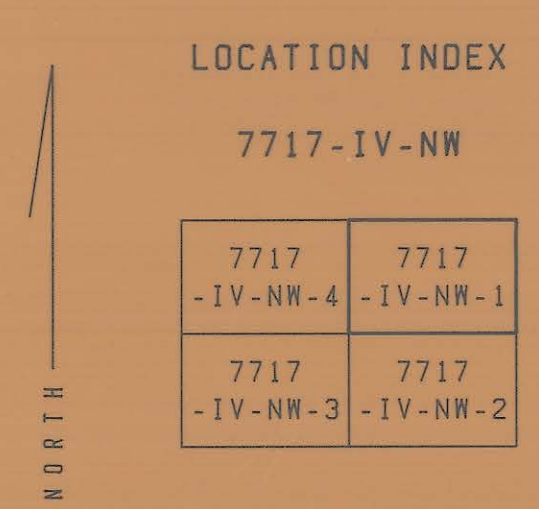
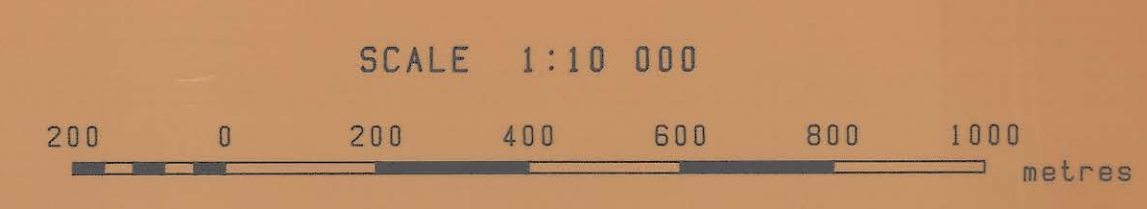
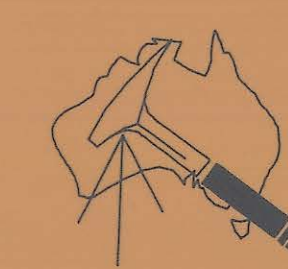


KING ISLAND SPECIAL GRASSY 7717-IV-NW-1

GEOPEKO



INTEGRATED SURVEY GRID
ZONE 55/1
GRASSY

AIRBORNE GEOPHYSICAL SURVEY
Total Magnetic Intensity

FLIGHT DATA

Nominal traverse line separation: 150m
 Nominal tie line separation: 1.5km
 Nominal data spacing along flight lines: 70m
 Nominal terrain clearance: 50m onshore - 15 m offshore
 Navigation and recovery using Motorola Mini-Ranger MRS-3
 Aircraft: Austirex Nomad N 22 B - Reg No: VH-FZP
 Magnetometer Type: Sonotek 6039 in stinger

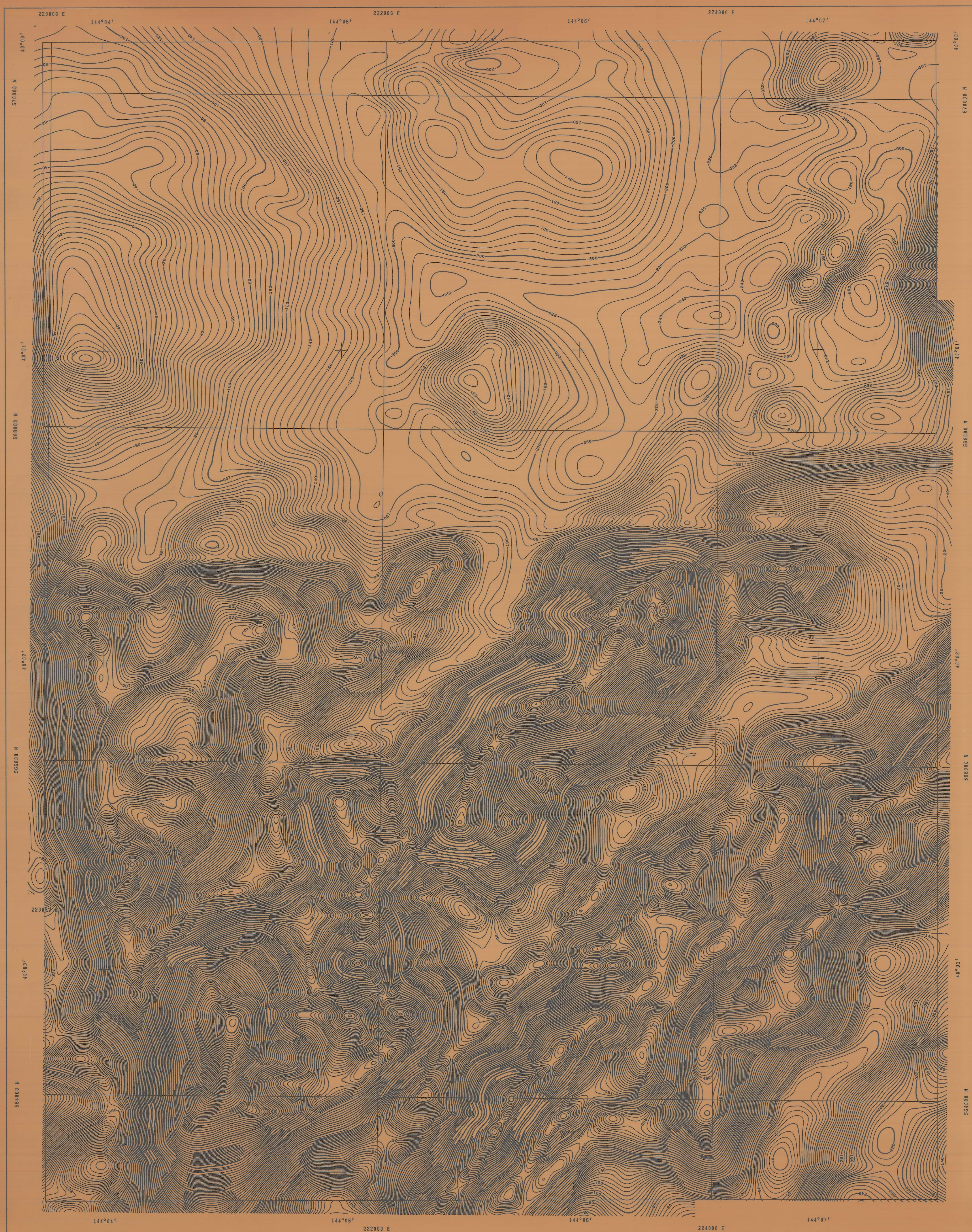
Survey Date: August 1980

MAP DATA

Contour Interval: 5nT
 IGRF subtracted prior to contouring

Survey flown and compiled by Austirex International Ltd
 Project management by Geopeko geophysical group

DRAWING NO: 6226 S/B



6226 S/B
1.1.1980
17/08/1981

Plan 17

5cm